

# TITAN PRO™

## Professional Grade Motor Run Capacitors

Professional Grade Motor Run Capacitors



**Not all capacitors are built the same. Take it to the PRO level.**



**A PRO can go the distance.**

**Our PRO™ runs 83% longer than a standard motor run capacitor.**

At 60,000 hours of operational life, Titan Pro™ Professional Grade Motor Run Capacitors get the job done by outperforming standard motor run capacitors of similar value in the toughest conditions.

# Check the stats. Choose the PROs.

## RELIABLE:

- 60,000 hours operation life

## FLEXIBLE:

- Titan PRO™ 440/370 volt design reduces inventory
- Titan PRO™ 370 volt offers best in class value

## COMPLIANT:

- Built to the toughest international standards for AC motor run capacitors including EIA-456A and IEC 60252-1:2001.

## TESTED:

- 100% electrical testing

## REINFORCED:

- Heavy-edge metallized polypropylene film is used for the dielectric
- The dielectric coils are impregnated under vacuum and high temperature with a proprietary bio degradable oil.
- Second generation anti-explosion safety switch



## Titan PRO™ Capacitor Product Line Offering:

- Single and Dual Sections
- Round and Oval sizes
- Voltage: 370 or 440/370

# Technical Specifications

Certification	IEC 60252-1:2001
Temperature	- 40° C to +70° C
Capacitance Tolerance	±5%
Capacity	Rated 2 MFD to 80+10 MFD
IR	≥3000S
Dielectric dissipation factor	$\text{tg}\delta \leq 0.002$ (50Hz~100Hz)
<b>APPLICATION REQUIREMENTS</b>	
Altitude	≤2000m
Residual voltage while loading	<10% of rated voltage
Permissible maximum current	<1.3 times of rated current

**“The product development phase was a very crucial time for us to create a truly professional grade capacitor that has it all – reliability, value, and flexibility. We continue to work closely with our manufacturer to ensure that each capacitor coming off the line is 100% electrically tested.”**

*Susan Kirkland, President  
Packard Inc.*

# A PRO can take the heat.



**Our PRO™ is 100% electrically tested to withstand whatever is thrown at it.**

Titan PRO™ is built from quality, proprietary materials such as a heavy edge Al/Zn polypropelene film which helps prevent the degrading effects which may otherwise cause premature failure.

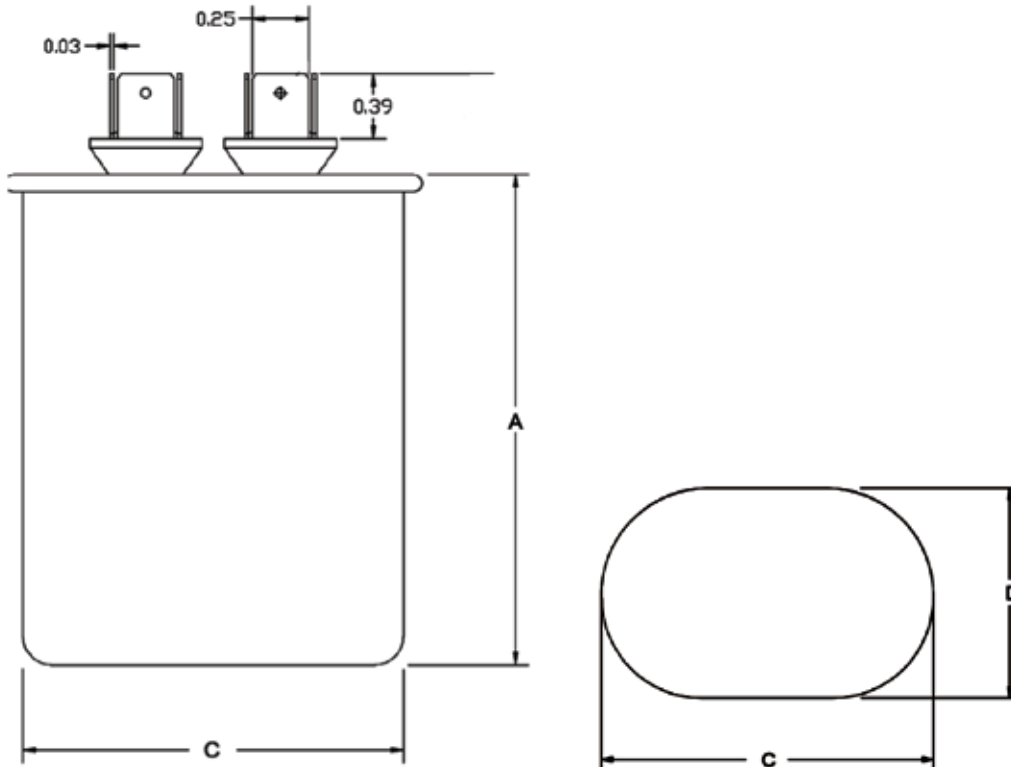
**OVAL SINGLE  
LINE DRAWINGS & CROSS REFERENCE**

Item Number	Cap size (C) width x (D) depth x (A) height (in)	Volts (VAC)	MFD	Industry no.
TOC2	2.17 x 1.3 x 2.17	370	2	12002/12902
TOC3	2.17 x 1.3 x 2.17	370	3	12003/12903
TOC4	2.17 x 1.3 x 2.17	370	4	12004/12904
TOC5B	2.17 x 1.3 x 2.17	370	5	12005/12905
TOC5	2.17 x 1.3 x 2.17	370	5	12005/12905
TOC6	2.17 x 1.3 x 2.17	370	6	12006/12906
TOC7.5	2.17 x 1.3 x 2.17	370	7.5	12007/12907
TOC7.5B	2.17 x 1.3 x 2.17	370	7.5	12007/12907
TOC10B	2.17 x 1.3 x 2.56	370	10	12008/12908
TOC10	2.17 x 1.3 x 2.56	370	10	12008/12908
TOC12.5	2.17 x 1.3 x 2.95	370	12.5	12009/12909
TOC15	2.17 x 1.3 x 2.95	370	15	12010/12910
TOC17.5	2.17 x 1.3 x 3.35	370	17.5	12012/12912
TOC20	2.91 x 1.91 x 2.68	370	20	12014/12914
TOC25	2.91 x 1.91 x 2.68	370	25	12015/12915
TOC30	2.91 x 1.91 x 2.87	370	30	12017/12917
TOC35	2.91 x 1.91 x 3.27	370	35	12018/12918

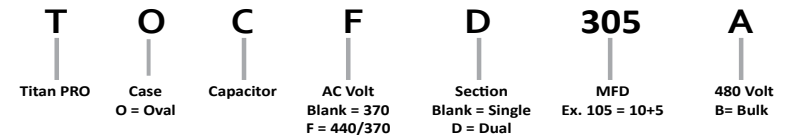
Item Number	Cap size (C) width x (D) depth x (A) height (in)	Volts (VAC)	MFD	Industry no.
TOC40	2.91 x 1.91 x 4.36	370	40	12021/12921
TOC45	2.91 x 1.91 x 3.66	370	45	12023/12923
TOC50	2.91 x 1.91 x 3.86	370	50	12025/12925
TOC55	3.66 x 1.91 x 2.99	370	55	12024/12924
TOC60	2.91 x 1.91 x 1.45	370	60	12087/12987
TOC70	3.66 x 1.97 x 3.39	370	70	12089/12989
TOC80	3.66 x 1.97 x 3.78	370	80	12090/12990
TOCF2	2.17 x 1.36 x 2.17	440/370	2	12026/12002
TOCF3	2.17 x 1.36 x 2.17	440/370	3	12027/12003
TOCF4	2.17 x 1.36 x 2.17	440/370	4	12028/12004
TOCF5	2.17 x 1.36 x 2.17	440/370	5	12029/12005
TOCF6	2.17 x 1.36 x 2.56	440/370	6	12030/12006
TOCF7.5	2.17 x 1.36 x 2.17	440/370	7.5	12031/12007
TOCF10	2.17 x 1.36 x 2.56	440/370	10	12032/12008
TOCF12.5	2.17 x 1.36 x 2.95	440/370	12.5	12033/12009
TOCF15	2.17 x 1.36 x 2.95	440/370	15	12034/12010
TOCF17.5	2.17 x 1.36 x 3.74	440/370	17.5	12036/12012
TOCF20	2.91 x 1.91 x 2.68	440/370	20	12037/12014
TOCF25	2.91 x 1.91 x 3.07	440/370	25	12040/12015
TOCF25A	2.91 x 1.91 x 3.66	480	25	
TOCF30	2.91 x 1.91 x 3.46	440/370	30	12041/12017
TOCF35	2.91 x 1.91 x 3.86	440/370	35	12043/12018
TOCF40	2.91 x 1.91 x 4.06	440/370	40	12045/12021
TOCF45	2.91 x 1.91 x 4.45	440/370	45	12048/12023
TOCF50	2.91 x 1.91 x 4.84	440/370	50	12049/12025
TOCF55	2.91 x 1.91 x 5.04	440/370	55	12050/12024
TOCF60	3.66 x 1.97 x 3.78	440/370	60	12051/12087
TOCF65	3.7 x 2.0 x 4.53	440/370	65	12011/12952

**Notes:**

- Height dimension does not include terminals. Add 1/2" for terminals.
- Dimensions are subject to change. When dimensions are critical, please call.



**PART NUMBERING SYSTEM - OVAL**

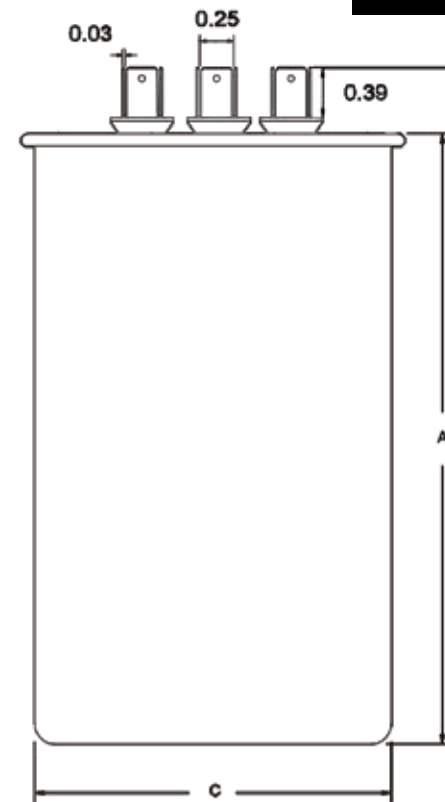
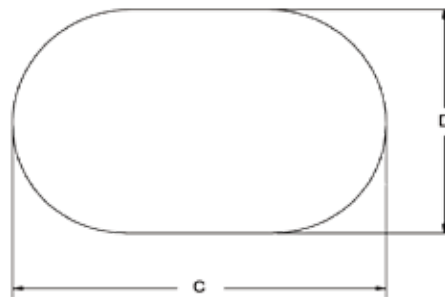


Item Number	Cap size (C) width x (D) depth x (A) height (in)	Volts(VAC)	MFD	Industry No.
TOCD1510	2.91 x 1.91 x 2.87	370	15+10	12058/12958
TOCD153	2.91 x 1.91 x 2.87	370	15+3	12141/12841
TOCD154	2.91 x 1.91 x 2.68	370	15+4	12056/12956
TOCD155	2.91 x 1.91 x 2.68	370	15+5	12057/12957
TOCD2015	2.91 x 1.91 x 3.27	370	20+15	12164/12964
TOCD205	2.91 x 1.91 x 2.87	370	20+5	12063/12963
TOCD253	2.91 x 1.91 x 3.07	370	25+3	12142/12842
TOCD254	2.91 x 1.91 x 3.07	370	25+4	12065/12965
TOCD255	2.91 x 1.91 x 3.07	370	25+5	12066/12966
TOCD2575	2.91 x 1.91 x 3.07	370	25+7.5	12143/12843
TOCD3010	2.91 x 1.91 x 3.27	370	30+10	12147/12847
TOCD303	2.91 x 1.91 x 3.27	370	30+3	12144/12844
TOCD305	2.91 x 1.91 x 3.27	370	30+5	12069/12969
TOCD3075	2.91 x 1.91 x 3.27	370	30+7.5	12146/12846
TOCD3510	2.91 x 1.91 x 3.46	370	35+10	12150/12850
TOCD353	2.91 x 1.91 x 3.46	370	35+3	12148/12848
TOCD354	2.91 x 1.91 x 3.46	370	35+4	12071/12971
TOCD355	2.91 x 1.91 x 3.46	370	35+5	12072/12972
TOCD3575	3.66 x 1.97 x 3.19	370	35+7.5	12149/12849
TOCD403	2.91 x 1.91 x 3.86	370	40+3	12151/12851
TOCD404	2.91 x 1.91 x 3.86	370	40+4	12158/12858
TOCD405	2.91 x 1.91 x 3.86	370	40+5	12171/12871
TOCD455	2.91 x 1.91 x 4.25	370	45+5	12174/12874
TOCD4510	2.91 x 1.91 x 4.25	370	45+10	12136/12836
TOCD505	3.66 x 1.97 x 4.17	370	50+5	12138/12838
TOCD555	3.66 x 1.97 x 4.76	370	55+5	12154/12854
TOCD5575	2.91 x 1.91 x 4.84	370	55+7.5	12155/12855
TOCD6010	3.66 x 1.97 x 4.37	370	60+10	12157/12857
TOCD605	3.66 x 1.97 x 4.76	370	60+5	12139/12839
TOCD6075	3.66 x 1.97 x 4.37	370	60+7.5	12156/12856
TOCFD154	2.91 x 1.91 x 2.68	440/370	15+4	12270/12056
TOCFD155	2.91 x 1.91 x 2.68	440/370	15+5	12271/12057
TOCFD1510	2.91 x 1.91 x 3.27	440/370	15+10	12777/ 12058
TOCFD205	2.91 x 1.91 x 3.07	440/370	20+5	12180/12880
TOCFD2015	2.91 x 1.91 x 3.86	440/370	20+15	12083/12164
TOCFD255	2.91 x 1.91 x 3.46	440/370	25+5	12184/12066
TOCFD2575	2.91 x 1.91 x 3.46	440/370	25+7.5	12182/12143
TOCFD2510	2.91 x 1.91 x 3.86	440/370	25+10	12183/12167
TOCFD304	2.91 x 1.91 x 3.86	440/370	30+4	12181/12145
TOCFD305	2.91 x 1.91 x 3.86	440/370	30+5	12187/12069
TOCFD3075	2.91 x 1.91 x 3.86	440/370	30+7.5	12038/12146

Item Number	Cap size (C) width x (D) depth x (A) height (in)	Volts(VAC)	MFD	Industry No.
TOCFD353	2.91 x 1.91 x 4.25	440/370	35+3	12085/12148
TOCFD354	2.91 x 1.91 x 4.25	440/370	35+4	12179/12071
TOCFD355	2.91 x 1.91 x 4.25	440/370	35+5	12185/12072
TOCFD3575	2.91 x 1.91 x 4.25	440/370	35+7.5	12188/12149
TOCFD403	2.91 x 1.91 x 4.65	440/370	40+3	12080/ 12151
TOCFD405	2.91 x 1.91 x 4.65	440/370	40+5	12086/12171
TOCFD4075	2.91 x 1.91 x 4.65	440/370	40+7.5	12189/12152
TOCFD455	2.91 x 1.91 x 5.04	440/370	45+5	12190/12174
TOCFD4575	2.91 x 1.91 x 5.04	440/370	45+7.5	12274/ 12153
TOCFD505	3.66 x 1.97 x 4.37	440/370	50+5	12108/12138
TOCFD5075	3.66 x 1.97 x 4.37	440/370	50+7.5	12013
TOCFD5510	3.66 x 1.97 x 5.16	440/370	55+10	12276
TOCFD555	3.66 x 1.97 x 4.57	440/370	55+5	12275/12154
TOCFD605	3.66 x 1.97 x 5.55	440/370	60+5	12109/12139

**Notes:**

- Height dimension does not include terminals. Add 1/2" for terminals.
- Dimensions are subject to change. When dimensions are critical, please call.

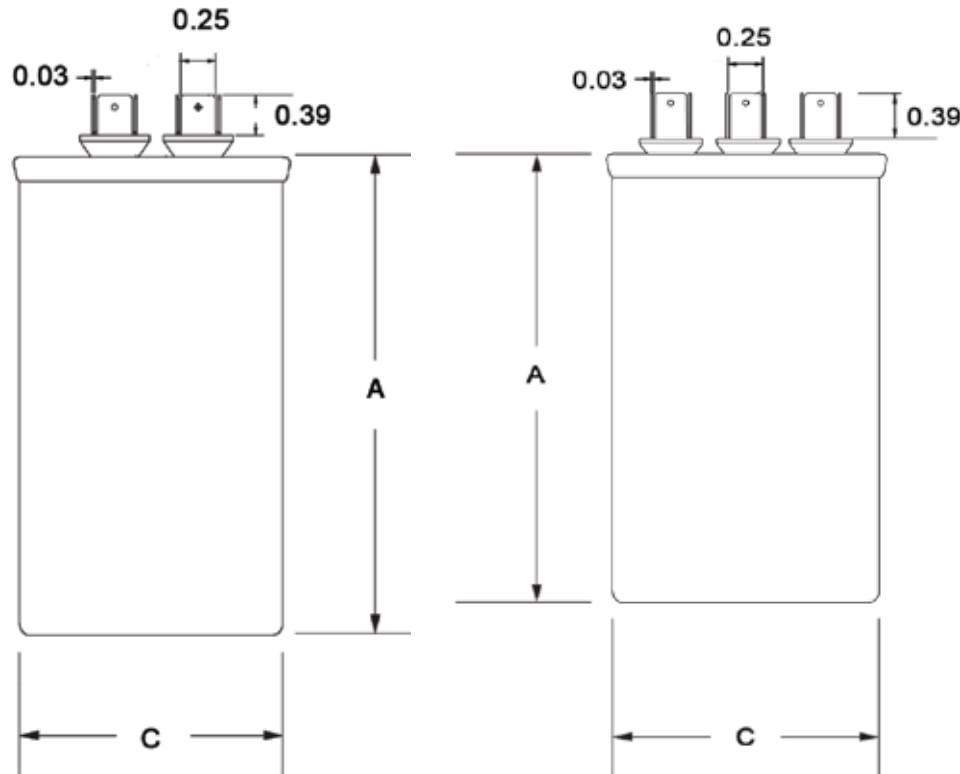


Item Number	Cap size (C) Diameter x (A) Height (in)	Volts(VAC)	MFD	Industry No.
TRC3	1.97 x 2.95	370	3	12093/12993
TRC4	1.97 x 2.95	370	4	12094/12994
TRC5	1.97 x 3.35	370	5	12095/12995
TRC6	1.97 x 3.15	370	6	12996/ 12096
TRC7.5	1.97 x 3.54	370	7.5	12097/12997
TRC10	1.97 x 3.15	370	10	12098/12998
TRC12.5	1.97 x 4.33	370	12.5	12099/12999
TRC15	1.97 x 4.13	370	15	12210/12710
TRC16	1.97 x 3.94	370	16	12211/12911
TRC17.5	1.97 x 3.94	370	17.5	12012/12712
TRC20	1.97 x 4.13	370	20	12214/12714
TRC25	1.97 x 4.53	370	25	12215/12715
TRC30	1.97 x 4.33	370	30	12217/12717
TRC35	1.97 x 3.94	370	35	12218/12718
TRC40	1.97 x 4.72	370	40	12221/12721
TRC45	1.97 x 4.72	370	45	12223/12723

Item Number	Cap size (C) Diameter x (A) Height (in)	Volts(VAC)	MFD	Industry No.
TRC50	1.97 x 4.53	370	50	12225/12725
TRC55	2.5 x 3.74	370	55	12226/12726
TRC60	2.5 x 3.74	370	60	12227/12727
TRC70	2.5 x 4.72	370	70	12229/12729
TRC80	2.5 x 4.33	370	80	12199/12899
TRC100	2.5 x 4.72	370	100	12916
TRCF3	1.97 x 3.54	440/370	3	12093/12103
TRCF4	1.97 x 3.35	440/370	4	12104/12094
TRCF5	1.97 x 3.94	440/370	5	12105/12095
TRCF7.5	1.97 x 2.95	440/370	7.5	12107/12097
TRCF10	1.97 x 3.54	440/370	10	12232/12098
TRCF12.5	1.97 x 3.94	440/370	12.5	12233/12099
TRCF15	1.97 x 4.33	440/370	15	12234/12210
TRCF17.5	1.97 x 4.13	440/370	17.5	12236/12212
TRCF20	1.97 x 4.13	440/370	20	12237/12214
TRCF25	1.97 x 4.33	440/370	25	12240/12215
TRCF30	1.97 x 4.53	440/370	30	12241/12217
TRCF35	1.97 x 4.92	440/370	35	12243/12218
TRCF40	2.5 x 3.74	440/370	40	12245/12221
TRCF45	2.5 x 4.13	440/370	45	12248/12223
TRCF50	2.5 x 4.13	440/370	50	12251/12225
TRCF55	2.5 x 4.33	440/370	55	12252/12226
TRCF60	2.5 x 4.33	440/370	60	12254/12227
TRCF70	2.5 x 4.72	440/370	70	12258/12229
TRCF80	2.5 x 4.92	440/370	80	12259/12199
TRCF90	2.5 x 4.53	440/370	90	12068

**ROUND SINGLE**

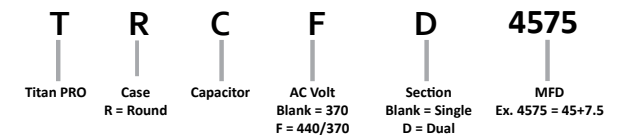
**ROUND DUAL**



**Notes:**

- Height dimension does not include terminals. Add 1/2" for terminals.
- Dimensions are subject to change. When dimensions are critical, please call.

**PART NUMBERING SYSTEM - ROUND**





Item Number	Cap size (C) Diameter x (A) Height (in)	Volts (VAC)	MFD	Industry No.
TRCD155	1.97 x 2.95	370	15+5	12703/12203
TRCD205	1.97 x 3.35	370	20+5	12260/12760
TRCD253	1.97 x 2.95	370	25+3	12242/12711
TRCD254	1.97 x 2.95	370	25+4	12175/12875
TRCD255	1.97 x 3.35	370	25+5	12261/12761
TRCD2575	1.97 x 3.15	370	25+7.5	12762/12262
TRCD303	1.97 x 3.54	370	30+3	12244/12720
TRCD304	1.97 x 3.15	370	30+4	12263/12763
TRCD305	1.97 x 3.54	370	30+5	12264/12764
TRCD3075	1.97 x 3.94	370	30+7.5	12724/12224
TRCD3010	1.97 x 3.54	370	30+10	12728/12228
TRCD3510	1.97 x 4.33	370	35+10	12738/12238
TRCD353	1.97 x 3.94	370	35+3	12082/12730
TRCD354	1.97 x 3.94	370	35+4	12731/12131
TRCD355	1.97 x 3.94	370	35+5	12266/12766
TRCD3575	1.97 x 4.33	370	35+7.5	12235/12735
TRCD4010	1.97 x 4.13	370	40+10	12746/12246
TRCD403	1.97 x 4.13	370	40+3	12074/12739
TRCD404	1.97 x 4.13	370	40+4	12767/12267
TRCD405	1.97 x 4.13	370	40+5	12178/12878
TRCD4075	1.97 x 4.53	370	40+7.5	12268/12768
TRCD4510	1.97 x 4.72	370	45+10	12750/12250
TRCD453	1.97 x 4.33	370	45+3	12747/12073
TRCD455	1.97 x 3.94	370	45+5	12269/12769
TRCD4575	1.97 x 4.33	370	45+7.5	12249/12749
TRCD5010	1.97 x 4.53	370	50+10	12239/12757
TRCD503	1.97 x 4.53	370	50+3	12075/12753
TRCD505	1.97 x 4.72	370	50+5	12191/12755
TRCD5075	1.97 x 4.92	370	50+7.5	12192/12825
TRCD5510	2.5 x 3.74	370	55+10	12067/12757
TRCD555	2.5 x 3.74	370	55+5	12193/12893
TRCD5575	2.5 x 3.74	370	55+7.5	12194/12894
TRCD6010	2.5 x 4.33	370	60+10	12865/12265
TRCD605	2.5 x 4.13	370	60+5	12195/12895
TRCD6075	2.5 x 4.13	370	60+7.5	12196/12896
TRCD7010	2.5 x 4.72	370	70+10	12055/12955
TRCD705	2.5 x 4.33	370	70+5	12053/12953
TRCD7075	2.5 x 4.33	370	70+7.5	12054/12954
TRCD8010	2.5 x 4.92	370	80+10	12201/12824

Item Number	Cap size (C) Diameter x (A) Height (in)	Volts(VAC)	MFD	Industry No.
TRCD805	2.5 x 4.72	370	80+5	12197/12897
TRCD8075	2.5 x 4.72	370	80+7.5	12198/12819
TRCD80125	2.5 x 4.53	370	80+12.5	12202/12722
TRCFD205	1.97 x 4.13	440/370	20+5	12115/12260
TRCFD2015	1.97 x 3.94	440/370	20+15	12112/12209
TRCFD2515	1.97 x 4.33	440/370	25+15	12114
TRCFD255	1.97 x 3.54	440/370	25+5	12278/12261
TRCFD2575	1.97 x 3.74	440/370	25+7.5	12279/12262
TRCFD303	1.97 x 4.33	440/370	30+3	12126/12244
TRCFD304	1.97 x 3.74	440/370	30+4	
TRCFD305	1.97 x 3.94	440/370	30+5	12281/12264
TRCFD3075	1.97 x 4.13	440/370	30+7.5	12282/12224
TRCFD3510	1.97 x 4.53	440/370	35+10	
TRCFD353	2.5 x 3.74	440/370	35+3	12077/12082
TRCFD354	1.97 x 4.53	440/370	35+4	12070/12231
TRCFD355	1.97 x 4.13	440/370	35+5	12283/12266
TRCFD356	1.97 x 4.33	440/370	35+6	
TRCFD3575	2.36 x 3.54	440/370	35+7.5	12284/12235
TRCFD403	2.5 x 3.74	440/370	40+3	12078/12074
TRCFD404	2.5 x 3.74	440/370	40+4	12785/12285
TRCFD405	2.36 x 3.54	440/370	40+5	12286/12178
TRCFD406	2.5 x 3.74	440/370	40+6	
TRCFD4075	2.5 x 3.74	440/370	40+7.5	12287/12268
TRCFD453	2.5 x 3.74	440/370	45+3	12079/12073
TRCFD455	2.5 x 3.74	440/370	45+5	12288/12269
TRCFD456	2.5 x 3.74	440/370	45+6	
TRCFD4575	2.5 x 3.74	440/370	45+7.5	12289/12249
TRCFD505	2.5 x 3.94	440/370	50+5	12290/12191
TRCFD5075	2.5 x 3.94	440/370	50+7.5	12291/12192
TRCFD555	2.5 x 4.13	440/370	55+5	12292/12193
TRCFD5575	2.36 x 4.33	440/370	55+7.5	12293/12194
TRCFD6010	2.5 x 4.53	440/370	60+10	12296/12265

**Notes:**

- Height dimension does not include terminals. Add 1/2" for terminals.
- Dimensions are subject to change. When dimensions are critical, please call.

Item Number	Cap size (C) Diameter x (A) Height (in)	Volts(VAC)	MFD	Industry No.
TRCFD60125	2.5 x 4.92	440/370	60+12.5	
TRCFD603	2.5 x 4.33	440/370	60+3	12160/12076
TRCFD605	2.36 x 4.33	440/370	60+5	12294/12195
TRCFD6075	2.36 x 4.53	440/370	60+7.5	12295/12196
TRCFD705	2.5 x 4.92	440/370	70+5	12255/12053
TRCFD7075	2.5 x 4.92	440/370	70+7.5	12166/12054
TRCFD7010	2.5 x 4.92	440/370	70+10	
TRCFD805	2.5 x 5.31	440/370	80+5	12257/12197
TRCFD8075	2.5 x 5.12	440/370	80+7.5	12216/12198
TRCFD8010	2.5 x 5.31	440/370	80+10	12117/12201

**W**e are extremely pleased with the quality and performance of the Titan Pro™ Capacitor. Feedback from our customers has been extraordinarily positive. Since we have stocked Titan Pro™ Capacitors, our return rate has been very low. It is most definitely a solid product that has become a staple in our business.”

*Donny Figueroa, Owner  
Refri-Cool Supply*

**“D**elivering a capacitor that both Packard and our customers can feel good about is important to us. From a performance standpoint, Titan PRO™ packs a huge punch, yet its price point is extremely favorable for our wholesale customers. All-in-all a great value.”

*Dan Lauterhahn, VP of Sales  
Packard, Inc.*

#### Approvals





**A PRO is built tough.**

**Our PRO™ line is built to the toughest international standards for AC motor run capacitors.**

Titan PRO™ complies with EIA-456A and IEC 60252-1:2001 for quality and performance.

a solution from

**Packard**

Supplying HVACR solutions, with your needs in mind.

For over 53-years, Packard has been a master distributor of HVACR solutions for manufacturers all over the world. Our extensive history with the strongest domestic suppliers and our vast experience with global sourcing, allows us to bring the most innovative and highest quality products available to our customers. Our brand offering includes top industry names, as well as our own exclusive private-label lines. With corporate headquarters located in Kennesaw, Georgia, Packard has strategic sales offices in New Jersey, Virginia, Florida, Oregon and California and Michigan as well as 39 independent manufacturers' representatives servicing wholesalers across the U.S.

Packard's unyielding dedication to providing the best service, selection and satisfaction will always be our top priority.

**Kennesaw, GA**

**Local: 770 . 427 . 5765**

**Toll Free: 800 . 334 . 1769**

**Fax: 770 . 427 . 5140**

**packardonline.com**

Packard supplies to Wholesale Distribution only

©2013 Packard, Inc.

